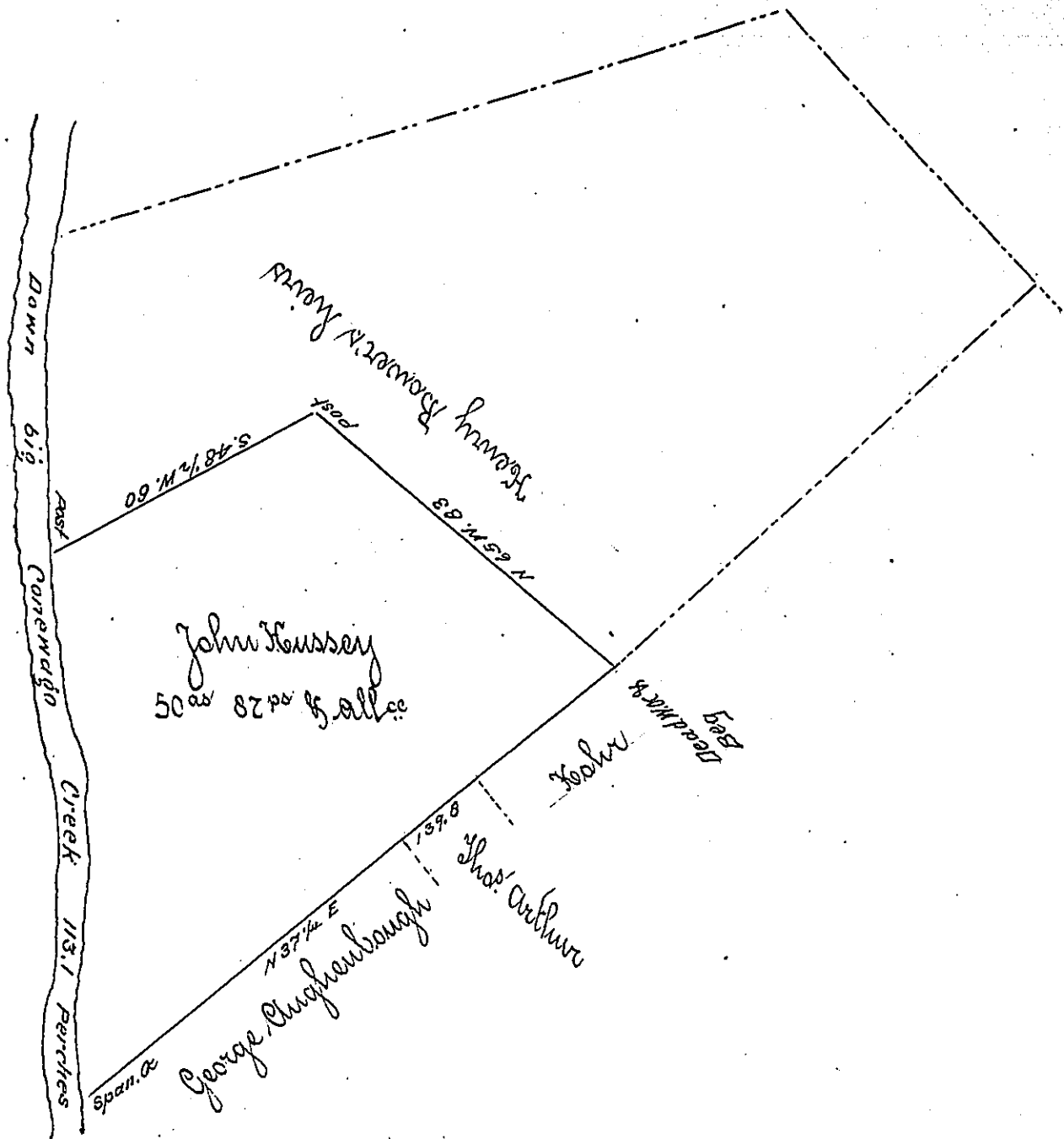


Courses & distances  
Down big Conewago

S. 21 1/2 E	27
S 23 1/2 E	38.9
S 7 E	27.2
S 20 E	20.
	113.1



Situate in Townbury township York County containing fifty acres eighty seven perches & allowance of six per cent part of a larger tract of 142 ac 108 perches & allowance surveyed by Daniel Small Esq. pr contract on Application of John Hussey for 200 ac dated 23<sup>rd</sup> June 1768 - Divided for Daniel and Matthias Becker owners of the above part - 24<sup>th</sup> January 1832.

To Jacob Spangler Esquire  
Surveyor General

Isaac Kirk D.S.

IN TESTIMONY that the above is a copy of the original remaining on file in the Department of Internal Affairs of Pennsylvania, made conformably to an Act of Assembly approved the 16th day of February, 1833, I have hereunto set my Hand and caused the Seal of said Department to be affixed at Harrisburg, this fourth day of January 1904.

*June P. Parsons*  
Secretary of Internal Affairs.